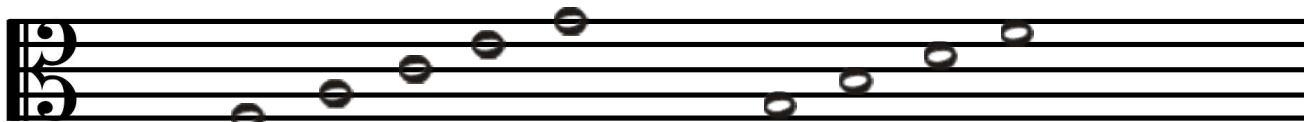


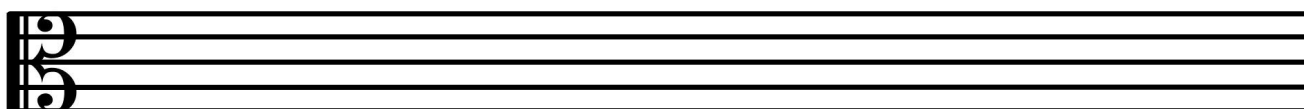
The Staff: Alto Clef



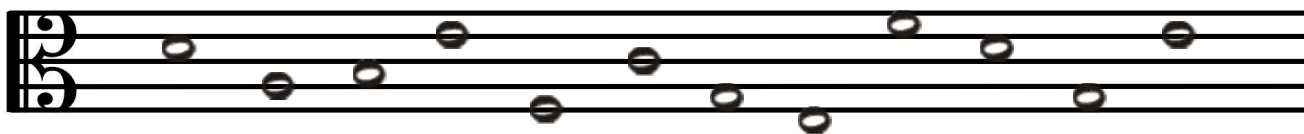
Lines: Fat Alley Cats Eat Garbage

Spaces: Green Birds Do Fly

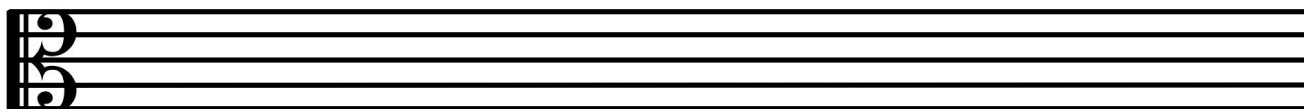
1. Try drawing 5 alto clefs.



2. Name the notes.



3. Draw the notes on the staff. If a note can be written in more than one place, choose one.



F G A D F C B G D E A

4. Come up with your own sentences to remember the lines and spaces of alto clef.

