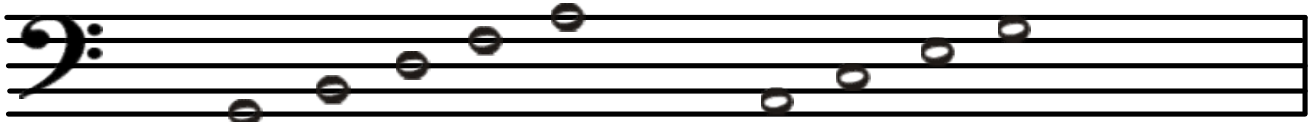


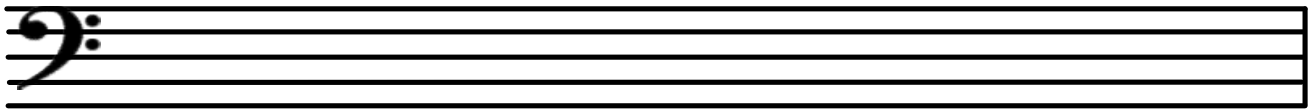
# The Staff: Bass Clef



Lines: Good Boys Do Fine Always

Spaces: All Cows Eat Grass

1. Try drawing 5 bass clefs.

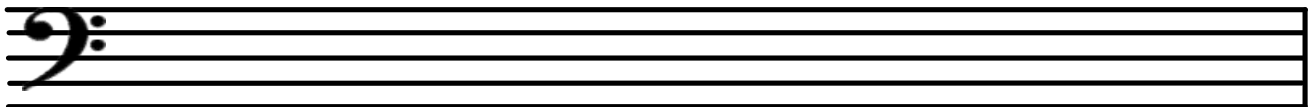


2. Name the notes.



\_\_\_\_\_

3. Draw the notes on the staff. If a note can be written in more than one place, choose one.



F G A D F C B G D E A

4. Come up with your own sentences to remember the lines and spaces of bass clef.

\_\_\_\_\_

\_\_\_\_\_